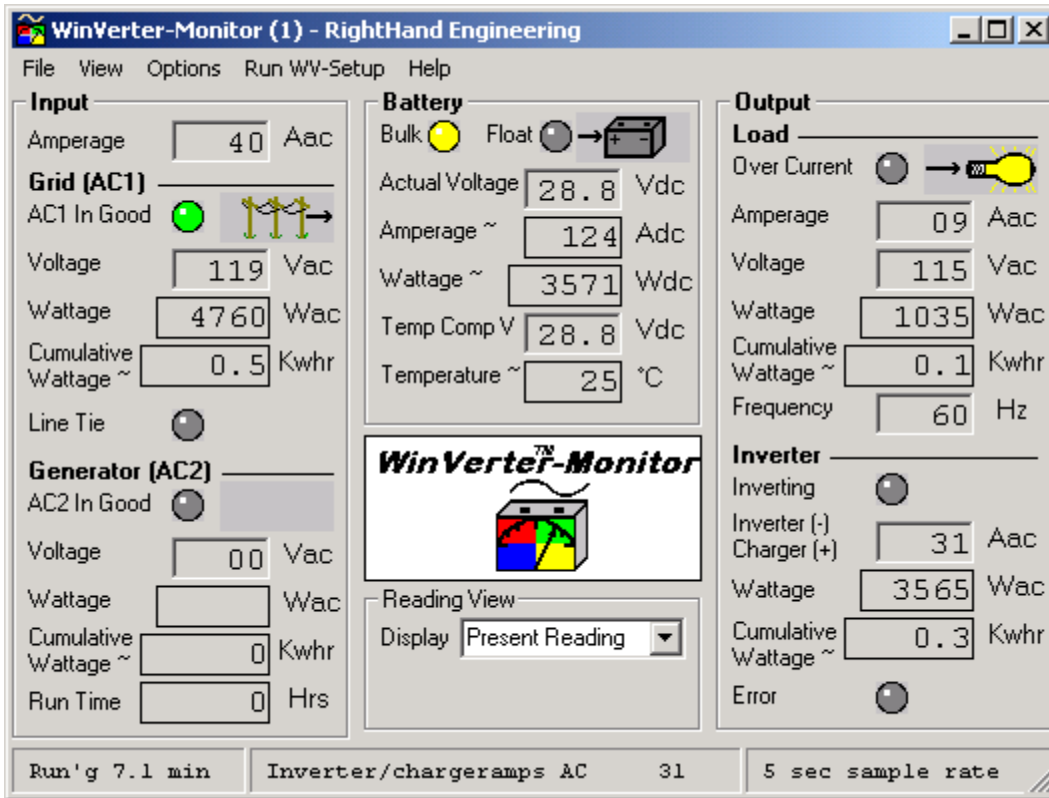


Have you ever wanted to know how your Trace™ SW/PS Inverter-based system is performing? Now there is a way to monitor and log data from your system so that you can see its performance.

WinVerter™ Monitor is a Windows®-based PC software program that continually monitors the inverter meter readings, while logging, displaying and watching for alarm conditions.



Feature	Benefit
<ul style="list-style-type: none"> <li>Windows®-based.</li> </ul>	<ul style="list-style-type: none"> <li>Operates on commonly available PCs and laptops.</li> </ul>
<ul style="list-style-type: none"> <li>Displays all readings on a single screen. Graphical images indicate power routing.</li> </ul>	<ul style="list-style-type: none"> <li>You see the present condition of your system at a glance.</li> </ul>
<ul style="list-style-type: none"> <li>Calculates watts, battery temperature, generator run time and Kilowatt-hours.</li> </ul>	<ul style="list-style-type: none"> <li>You see information that is not readily obtained from the inverter itself.</li> </ul>
<ul style="list-style-type: none"> <li>Keeps a running history of readings.</li> </ul>	<ul style="list-style-type: none"> <li>You see minimum, maximum and average values for the past hour, day, week, etc.</li> </ul>
<ul style="list-style-type: none"> <li>Compares readings against selectable high and low limits.</li> </ul>	<ul style="list-style-type: none"> <li>You see and hear when a reading has gone beyond your threshold of comfort.</li> </ul>
<ul style="list-style-type: none"> <li>Outputs to file the accumulated hourly readings every day.</li> </ul>	<ul style="list-style-type: none"> <li>You can see &amp; compare past system performance using a spread-sheet.</li> </ul>
<ul style="list-style-type: none"> <li>Provides controls for your inverter.</li> </ul>	<ul style="list-style-type: none"> <li>You can fully control your inverter from your PC, just like using the inverter's own control panel.</li> </ul>
<ul style="list-style-type: none"> <li>NEW! Runs WinVerter-Setup Plus.</li> </ul>	<ul style="list-style-type: none"> <li>Manage your inverter's Setup Menu parameters without leaving Monitor.</li> </ul>
<ul style="list-style-type: none"> <li>NEW! Displays inverter Error Causes.</li> </ul>	<ul style="list-style-type: none"> <li>Quick display of inverter error causes.</li> </ul>

Underline indicates new features

## Communications

Using the Trace SWCA Communications Adapter, *WinVerter-Monitor* continually reads the 9 meters in the inverter's "Meters" menu.

The program takes only 4 to 6 seconds to read and display all of these meters providing near-real time display on the computer screen.

## Graphical Display



*WinVerter-Monitor* displays a graphic image of each power port of the Inverter. Thus at a glance you can see when you are powering loads, charging batteries, inverting, running your generator, using grid power or selling.

## Calculated Values

The program also interprets other useful information from the meter readings. From volt and amp readings it calculates watts. From elapsed time it calculates kilowatt-hours and generator run time. From battery voltages it calculates battery temperature (requires Trace BTS option). If you supply battery data, it will even display the temperature-based battery capacity.

NOTE: Because the meters on the inverter have coarse resolution and show only the real portion of the current, the data displayed by *WinVerter-Monitor* is only approximate.

## Historical Values

*WinVerter-Monitor* keeps a running history of the data and allows you to see the minimum, maximum and average values for the past hour, day, week, month or year.

## Alarms

The program allows you to set both high and low alarm limits for each value. Whenever a reading goes beyond your limits, the program provides a visual indication by turning the background of the reading red. You may optionally enable an audible alarm through your PC's sound maker, as well as an external alarm through your PC's RS-232 com port.

Alarm events are recorded allowing you to observe past events.

## Error Causes

The program provides an easy way to view all error causes at a glance. When an inverter error occurs it can produce an audible and visual alarm and gets logged along with time and date.

## Data Logging

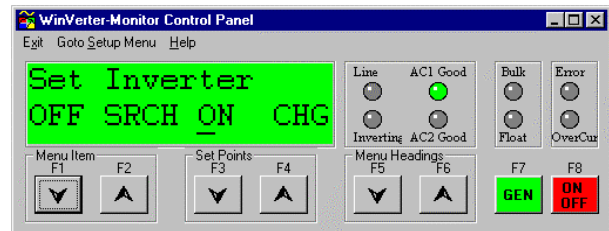
As long as *WinVerter-Monitor* is running it is able to accumulate and record readings from the inverter. If so desired, the program will write a log file every day at midnight. This contains the minimum, maximum and average data of every hour for every value displayed by the program.

Instructions included in the program's help text (on-line user's manual) give you detailed step-by-step instructions on how to import these data files into Microsoft's Excel spreadsheet program.

## Manage Setup Menu Parameters

When used with *WinVerter-Setup Plus*, *WinVerter-Monitor* can run the Setup program while keeping all of its accumulated data.

## Control Panel



When desired you may temporarily suspend data collection and bring up the control panel screen. This screen looks and operates just like the control panel built into the SW inverter. From the control panel you can control the inverter mode, control the generator, and program the inverter.

## PC System Requirements

- Processor: Pentium or equivalent minimum.
- Operating System: Windows 95 or later.
- Pointing Device: required.
- Video Display: VGA or better. Color recommended.
- Removable Disk: Multi-read CD-ROM drive.
- Fixed Disk Memory: 10 MB of free space minimum plus 1 MB per month for daily logs.
- Serial Ports: One free RS-232 port (9-pin recommended) per running copy (two copies may be run for stacked inverters).

## Inverter Requirements

- SW Version: 4.01 thru 4.20 software.
- PS Version: 5.0 thru 5.3 software.
- Comm: SWCA Version 1.01 thru 1.02.
- Supported Models: All

Trace is a registered trademark of Xantrex Technology Inc.  
Windows is a registered trademark of Microsoft Corporation